

elements projects





designpanel – Elements for innovative architecture

■ Our intention is to create atmosphere and to wake up emotions. New developments, innovative materials and first class design are the vital modules for trend-setting architecture. Our products will astound you and delight you. They are the connecting link between functionality and aesthetics, between cool objectiveness and living nature.

Elements for individual designs

designpanel have developed and produced innovative decorative surfaces from synthetic materials in conjunction with trend-setting light technology. Our products have been awarded several important design prizes.

Our core products are a wide range of panels: **Wavepanels** will delight you with the relief-like structures integrated in their surfaces. **Iceplex** and **Aquaplex**, two top quality products made from acrylic glass, are distinguished by their multitude of application options and a wide range of colours. **Invision** is the name of our product range with inlays made from organic materials, textiles or metals.

This line is completed by our **Lightpanels**, homogenous flat panel lights that fulfil the highest quality requirements.

The combination potential of our product lines gives the designer great individual scope together with far-reaching options with regard to the implementation of his concepts.

Quality – Made in Germany

All our products are made in Germany in our own production facilities and they are subjected to continuous quality inspections. Many of our orders require extensive manual work. For example, all of our Invision inlays have to be inserted manually. This process is needed in order to guarantee that your products correspond precisely with your wishes and requirements.

Environment and sustainability

Environmental compatibility, a long service life and an energy-efficient production are aspects that apply equally to all of our products. Our panels are manufactured through heating and rolling under vacuum and without the addition of chemical substances. No environmentally harmful substances are produced during these processes. The basic materials are also harmless: Acrylic glass is food-safe and is also used in the medical sector as a result of its excellent compatibility and PET is frequently used in the food industry. All of our materials can be recycled to a great extent.

Lightpanels are noted for their positive energy balance: The LEDs that are used comply with the most up-to-date technology, have a long service life and a notably low consumption rating. The aluminium frames are 100% recyclable and the remaining components can normally be reused in other production processes.



Technology – The most advanced

Service is our forte

■ We are able to provide you with personal on-site consulting thanks to our extensive network of customer service consultants in Germany, as well as numerous sales partners abroad.

Planning

Customised solutions according to size – that needs experienced specialists. You will find that our design team has the planning competence that you are looking for – interior designers, engineers, technicians and specialists from the craft sectors are available to work with you.

Production

We only use modern production technologies. We specialise in CNC milling, laser cutting, 3-D shaping and innovative adhesive

technologies. Our electronic, lighting and control technology experts are involved in the planning, too. We also work with other materials such as metal and wood in addition to our synthetic materials. We can guarantee to provide the necessary expertise when it comes to the product-specific processing of complex applications – and all from a single company.

Installation

Our competent team of specialists will work on-site with you. They can advise you and will deliver, assemble and install our products. We can also undertake any maintenance that might be needed in the future.





INVISION – vision becomes reality





INVISION – vision becomes reality

■ **Invision** is pure design. Organic materials, cool metal or mel-low textiles, embedded in transparent plastic. The pre-requisite for this innovative material bonding is the special rolling technology developed by us. The numerous surface design possibilities and further processing of these top quality panels made from polyester (PETG) give you a considerable scope for your application.

Different effects can be created to your liking and to fulfil your application purpose during the production of an **Invision** panel. Digital printing in virtually unlimited variety of colours enables to create an individual design to your projects. It is also possible to

insert the multi-layer material inlays at different levels. This type of three-dimensional effect intensifies the visual depth effect. Our **Invision** panels are made opaque by their white laminated background. They produce a fascinating room lighting design solution when used in combination with our **Lightpanels**.

There are numerous designs to choose from in our product range such as **nature**, **living**, **techno** or **effects**. Special inlays can also be used upon request.



nature

The varieties found in nature are our inspiration. All of our panels in our nature line are produced using original organic materials, so that their transient elegance is permanently captured inside lasting plastic. Only a few examples are shown here – you can find our complete product line on our website.



bamboo orange



fern



birch



feather



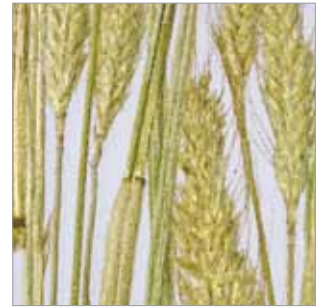
jungle



leaves nature



stem



corn

living

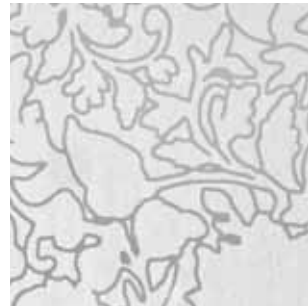
Exquisite fabrics and decoration materials are embedded in the plastic panels as part of a special patented process. Exceptional decorative elements for creative room outfittings can be created, depending on the material used and the panel thickness. We are showing a few examples of the elements that we consider to be our standard solutions here. Other inlays are available upon request.



asia brown



siam



indra



korea paper gold

techno / effects

These two lines are based on metal and high-tech materials. Cool radiances and exceptional structures lend the products a futuristic touch and provide you with innovative components for modern interior design. You can find other examples on our website.



sefar



alu light



twist



matrix





WAVEPANEL – structure in motion



WAVEPANEL – structure in motion

■ Living structures – the **Wavepanel** name well describes the impression that surrounds these innovative materials, which are given a three-dimension character as a result of our high-tech milling processes. You will be impressed by the interaction of material and light in our relief-like structures.

The source materials that we use are acrylic glass or mineral materials, such as Corian®, HI-MACS®, Staron® or Varicor®, all of which have varied surfaces that resemble natural stone.

Wavepanels will give you a huge range of design options as a result of their different processing methods: They can be machined, laser cut, thermoformed and bonded using different technologies. Even more are available for selection during the final processing – the surfaces can be satinised, polished or varnished. Specification details can be found on Page 18.



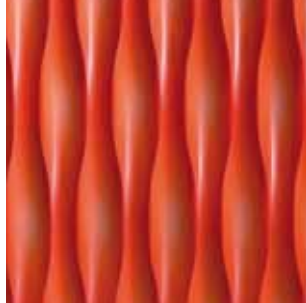
Wavepanels made from acrylic glass

Wavepanels made from acrylic glass have a tremendous advantage – they are translucent. Natural incidence of light or specific illumination, using lightpanels for example, will give special emphasis to the decorative structures of our translucent Wavepanels. Another plus is the variety of colours available. You can combine differently coloured acrylic glass sheets using surface adhesion, which will create completely individual colour patterns as a result of the different processing depths realised during the milling. You can find more detailed information on our website.

You can choose from three different structures. Examples made from Iceplex are shown here:



Waves

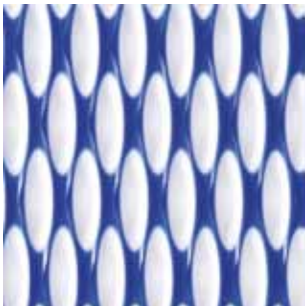


Lens



Linear

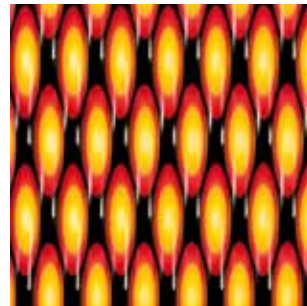
Effect examples using multi-coloured, coated acrylic glass:



2-coloured lens



2-coloured lens



3-coloured lens

The special feature: The multi-coloured Wavepanel's three-dimensional structure causes that the panel changes appearance when viewed from different angles. Individual designs and colour combinations are available upon request.

Wavepanels made from solid surface materials

The plasticity of the natural stone resembling surfaces is a result of the processing into Wavepanels. The relief-like structures lend the materials their very special character and make them exceptional for the use as architectural elements. You will find products made from Corian® in our standard range, but Wavepanels can be manufactured from any solid surface material in practice. Come to your own decision based on your personal taste and your intended use.





ICEPLEX – the magic of colour

■ Our **Iceplex** line is made from high-quality acrylic glass that is satinised on both sides. This lends a frozen effect to white materials. Coloured **Iceplex** will remind you of the soft tones of mellow, fruity sorbets. They are distinguished by their versatile design options and fulfil the highest visual demands.

The really significant character in the object design is created by the velvety light diffusion, which appeals the spectator and seduces him to touch the surface. **Iceplex** is available in many impressive colours and in maximum sizes up to 3050 x 2030 mm and sheet thicknesses up to 20 mm. The scratch-resistant surface ensures a long service life. You can find our complete colour range on our website.





AQUAPLEX – a sense of lightness

■ **Aquaplex** – inspired by the apparent weightlessness of water, paired with exceptional load-bearing capacity and strength. Our range of colours will also remind you of the gentle shades of watercolours. **Aquaplex** is available in sheet thicknesses of up to 54 mm and it is especially suited to bearing heavy weights and is particularly durable and hardwearing.



The semi-transparency of the acrylic glass produces an interesting visual effect, which can be further emphasised by creative illumination. **Aquaplex** provides countless design opportunities as a result of its excellent shaping capabilities and the huge range of colours available.

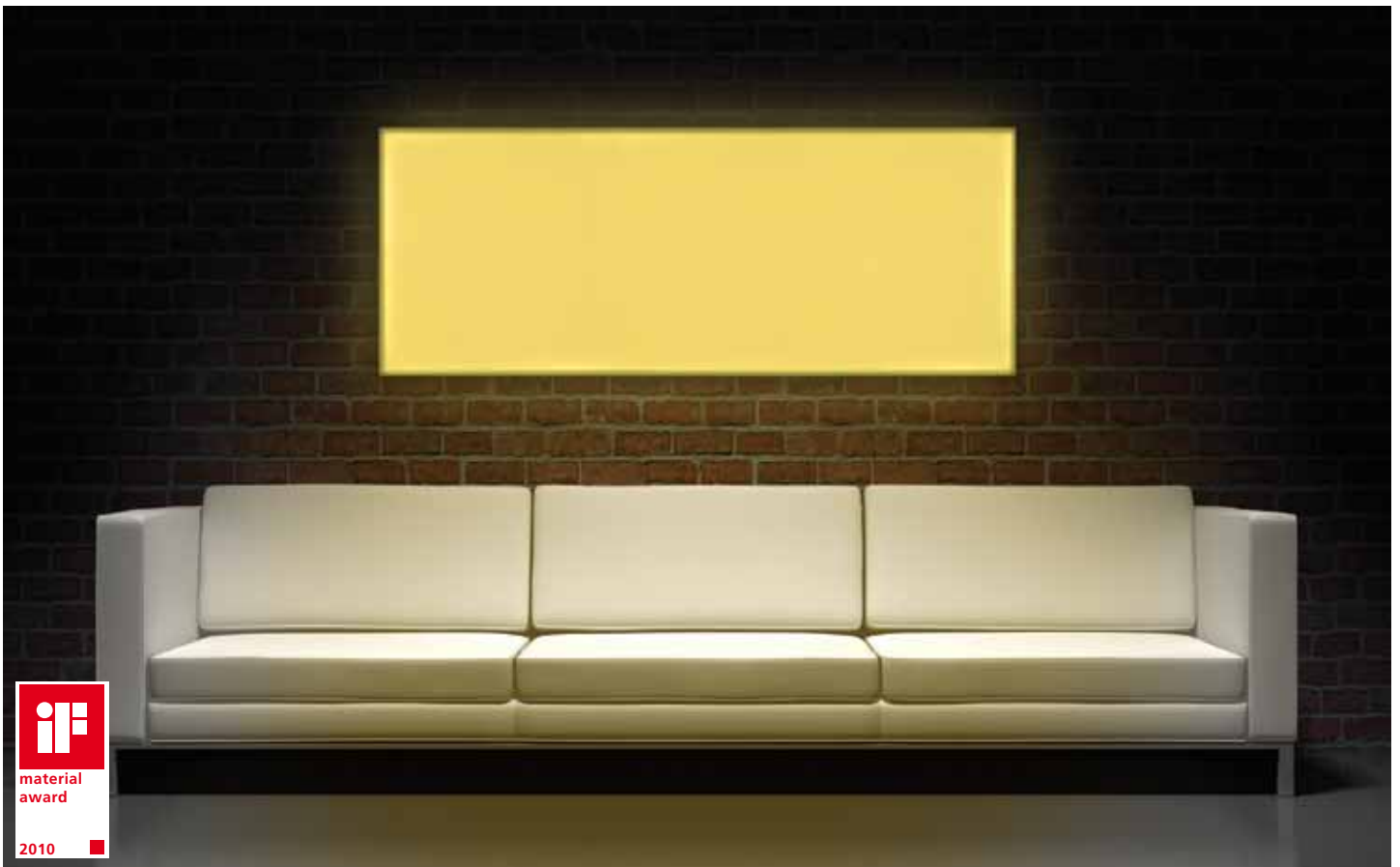
Aquaplex is UV-resistant and suitable for use in outdoor areas. Another advantage: The surface can be re-ground after several years to give it a fresher look! More detailed information can be found on our website.





LIGHTPANEL – illuminate your life





LIGHTPANEL – illuminate your life

■ **Lightpanels** are flat LED lights with excellent properties: A light and homogenous illumination of the visual area can easily be realised as the light is fed in through the edges and this is with a full depth of only 30 mm and a maximum size of 2 x 3 metres!

The freedom of implementing your creative ideas is virtually unlimited. Our customised LED-flat panel light solutions are suitable for installation in ceilings, in walls or even in floors and many different shapes are possible. In combination with either **Invision** or **Wavepanel**, **Lightpanels** are even more extraordinary and fascinating design elements. White light can be chosen for use

in warm or cold tones, depending on your tastes and the application, or as coloured light in mono-colours or in the energetic RGB colour spectrum.

Lightpanels are perfect when used as atmospheric room lighting, decorative eye-catchers or advertising vehicles and they can also be used outdoors and in wet areas. Many other special solutions are possible. You will find the specifications on Page 18 and you can request more detailed information from us if you are interested.



Basic lightpanel models

The classic basic lightpanel is called **Lightpanel original** – in which the satinised acrylic glass surface lies in an anodised aluminium frame. Our **Lightpanel frameless** is of great creative interest – an acrylic glass sheet sits precisely on the frame. This version is ideal for flush mounting and sophisticated installation solutions. The low 15 mm depth of our **Lightpanel slim** will astound you. It can be used in many applications and is particularly suited for free-forming use.



Lightpanel original



Lightpanel frameless



Lightpanel slim

Lightpanels for special applications

It can be used in ceiling, floor or even damp surroundings: **Lightpanels** with special fittings or construction can be used for special application purposes. Our **Lightpanel cover** has an acrylic glass cover over the aluminium frame that is virtually undetectable. The version is ideal for ceiling installations as it can be bolted in from the sides. **Lightpanel splash** has been designed for use outdoors and in wet areas and its special anti-splash protection makes it ideally suited for this type of application.

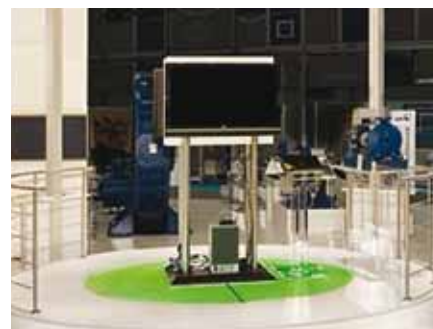
Lightpanel floor is the name of our very solid, walk-on version for use in floors. The flat design (from 15 mm onwards) enables the floor to have a low height.



Lightpanel cover



Lightpanel splash



Lightpanel floor

Lightpanels for special designer solutions

Lightpanel plus means unlimited design variations: It is our Lightpanel original combined with translucent decoration materials. If you use Invision or Wavepanel you will have exceptional light components with illuminated natural materials or relief structures at your disposal. Our **Lightpanel picture** is also very flexible and digital prints or back-lit transparencies can be homogeneously illuminated and exchanged easily and quickly. **Lightpanel individual** represents virtually limitless design opportunities: Light components in bent shapes or even free-forming, installed in different constructions, are perfect for implementing your ideas.



Lightpanel plus



Lightpanel picture



Lightpanel individual

Specifications

Designpanels – Sizes and material properties

	Invision*	Aquaplex	Iceplex / Wavepanel (acrylic glass)	Wavepanel (solid surface materials)***
Material	PETG (Polyethylenterephthalat Glycol) and embedded materials**	Polymethylmethacrylat (PMMA)	Polymethylmethacrylat (PMMA)	Acrylic or resin-composite mineral materials, depends on the manufacturer
Food safety, environmental impact	Food safe, except for the version containing UV protection	Food safe; Aquaplex does not contain any toxic substances or heavy metals, it is water-insoluble and recyclable	Food safe; does not contain any toxic substances or heavy metals, it is water-insoluble and recyclable	Allowed for contact with food
Fire protection	Depending on embedded material EU category B1 or B2	EU-category E (B2)	EU-category E (B2)	B1 or B2, depends on the product and manufacturer
Range of temperature application	Permanent service temperature up to 70° C	Permanent service temperature up to 70° C, short-time temperature up to 90° C	Permanent service temperature up to 80° C, short-time temperature up to 90° C	Up to a maximum of 200°C; depends on the product and manufacturer
Resistance to UV radiation	Available on request	Suitable for outdoor usage	Suitable for outdoor usage	Suitable for outdoor usage
Thermic expansion/contradiction	The coefficient of linear expansion is 0.05 mm/m °K. Allowances should be made especially in framed applications.	The coefficient of linear expansion is 0.07 mm/m °K. Allowances should be made especially in framed applications.	The coefficient of linear expansion is 0.07 mm/m °K. Allowances should be made especially in framed applications.	approx. 0.05 mm/m °K – varies with the product and manufacturer
Specific weight	approx. 1.27 g/cm ³	1.19 g/cm ³	1.19 g/cm ³	approx. 1.71 g/cm ³
Processing	Suitable for all conventional processing techniques. Cold bending and thermoforming possible, depending on the embedded material.	Suitable for all conventional processing techniques (sawing, drilling, polishing etc.) as well as thermoforming and vacuum forming	Suitable for all conventional processing techniques (sawing, drilling, polishing etc.) as well as thermoforming and vacuum forming	All regular processing techniques including thermoforming
Maximum dimensions	1450 x 3000 mm (standard), 1950 x 3000 mm (from 20 panels upwards)	Up to 3000 x 2000 mm in all thicknesses up to 29 mm; up to 1950 x 1150 mm in all thicknesses up to 34 mm	Iceplex: 2030 mm x 3050 mm; Wavepanel: approx. 970 mm x 3000 mm	Maximum 3700 x 950 mm, 3700 x 600 mm, varies with the manufacturer
thickness	4 / 6 / 8 / 10 / 12 / 20 / 24 mm; minimum thickness depending on embedded material	From 8 mm up to maximum 100 mm	Iceplex: 3 / 4 / 5 / 6 / 10 mm; Wavepanel: standard thickness approx. 9.5 mm + special thicknesses	Varies with the product and manufacturer

* Made Under License from Eastman Chemical Company

** Batch-related colour and structure differences can occur as natural products are frequently used in our Invision products

*** Precise sizes and data can be found in the relevant data sheets issued by the solid surface manufacturers

Lightpanels – Sizes and features

The following table will give you a first overview. However, sizes and technical features depend on the relevant application purpose. Please do not hesitate to contact one of our consultants if you are interested.

Lightpanels	original	plus	frameless	slim	cover	splash	floor	individual
Are suitable for:								
Internal areas	•	•	•	•	•	•	•	•
Outside / damp areas						•		optional
Ceiling installation	•				•			optional
Wall mounting	•	•	•	•	•	•		optional
Floor installation				•			•	optional
Choose from:								
RGB LEDs	•	•	•		•	•	•	•
White LEDs	•	•	•	•	•	•	•	•
Single-colour LEDs	•	•	•		•	•	•	•
Dimmable	•	•	•	•	•	•	•	•
Remote controllable	•	•	•	•	•	•	•	•
EIB-compatible	•	•	•	•	•	•	•	•
Thermal forming (bending)				•				•
2D free-forming is possible				•				•
Dimensions:								
Max. size 3000x2000 mm*	•	•					•	•
Max. size 3000x1000 mm			•		•	•		
Max. size 3000x800 mm				•				
Overall depth**	30 mm	30 + x mm	from 36 mm +	from 15 mm +	33 - 36 mm	33 - 36 mm	30 mm	from 15 mm +
Guarantee:								
24 months (LED technology)	•	•	•	•	•	•	•	•

* The maximum Lightpanel plus size depends on the surface decoration that you want

** The overall depth depends on the thickness of the decoration panel in the case of Lightpanel plus

Project descriptions

Projects from pages 4 and 5: Allianz Hochhaus, Frankfurt – Show floor



A light wall accounts for the room's visual highlight – Lightpanels plus and Invision "stem" panels were used here and these were arranged in a seamless layout and illuminated using alternating RGB colours. The colour change control module is integrated in the building control system and can be programmed according to the customer's wishes.

Customer: IVG Immobilien Management Holding AG | Planning: Grünzig Ingenieurgesellschaft mbH, Bad Homburg

Projects from pages 10 and 11: Südwesbank Stuttgart – Head office



Wavepanels were used to create the huge reception counter and the advice counter. This project's special requirement was the 3-dimensional thermoforming of the rounded counter panels. The relief structure is a custom-fit version that runs over the entire length and seems to be made all of one piece. Counter privacy is provided by the white Iceplex panels with a satinised surface. Doors made from Invision "stem" panels provide the green counterpoint.

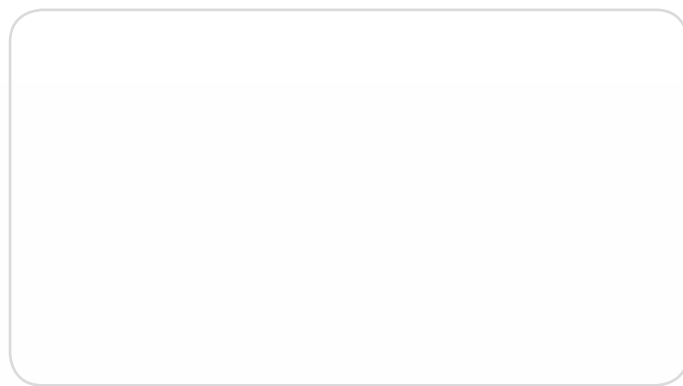
Customer: Südwesbank AG, Stuttgart | Planning: Johannes Ruf intérieur – extérieur, Ulm | Photo: H. G. Esch

Projects from pages 14 and 15: Obermain Therme, Bad Staffelstein – Bar



The special feature: Different lighting effects can be called up using a freely-programmable remote control and you can choose between discreet, peaceful mood lighting, surprising colour changes as well as changing colour gradients. The rounded light panel elements fitted on the counter are thermoformed and they are only 30 mm deep. The light panel mounted on the wall has been drilled in several places and is used as support for the glass bottoms – the decorative bottles appear to float ...

Customer: Obermain Therme, Bad Staffelstein | Planning: Feulner Raumkonzepte, Cöveritz



Designpanel GmbH
Dagobertstraße 15
90431 Nuremberg
Germany

Tel. +49 911 321546-0
Fax +49 911 321546-22
e-mail: info@designpanel.de
www.designpanel.de

 **designpanel**
elements for innovative architecture