

Living Local
938 Pigeon
+
BIOMORPH
Medium Grey 968

LOOK



VIRAL SERIES: CONVERSATION

Jess Riva Cooper

Ceramic, glaze, decal



LOOKING FORWARD

The design world of today speaks to myriad cultural shifts happening around the globe, from the merger of craft and technology to our changing relationship to nature and space. By exploring four key ideas of our present moment – Unmade, Undetached, Unbias and Uncharted – we seek to discover the evolving resonance between design, flooring and culture.

UNMADE

TARNUNG #3
Rob Voerman

Glass, Plexi-glass,
wood, cardboard
www.robvoerman.nl



UNMADE

In this era of nonstop mass production, we are rethinking how things are made. The prominence of technology is converging with a return to craft and the handmade. New forms are being created with the rise of 3D printing and manipulation of tools and materials. Design has broken the mold. Shapes have shifted to give us a new language.



(from left)
Untitled from the Series
FICTIONS
Filip DUJARDIN

STACK, TERRACOTTA
Torbjørn Kvasbø
English terracotta clay
Photo: Thomas Tveter

(opposite)
17TH ENVOY
Ruth Hardinger
Concrete, cardboard

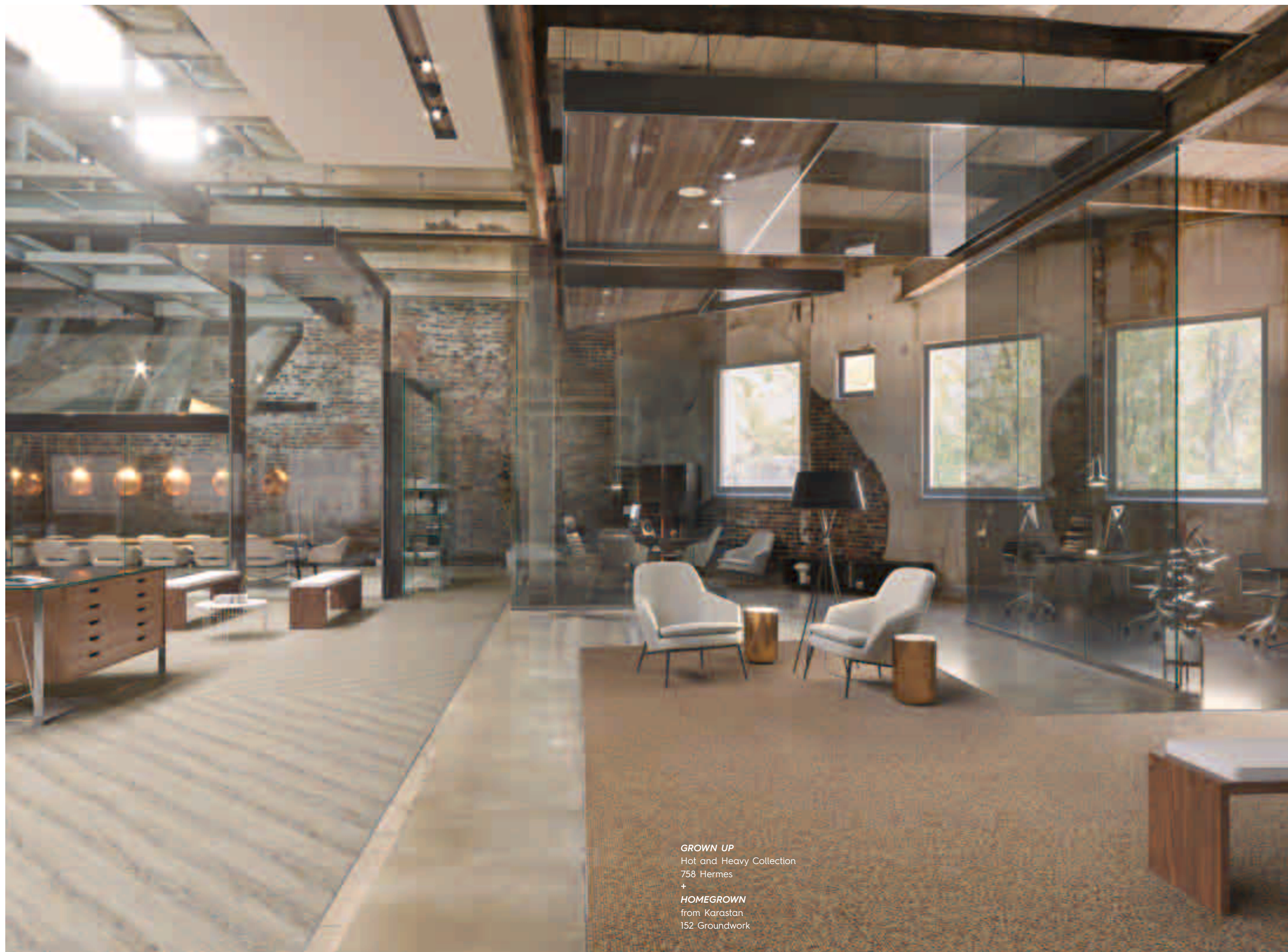




SOFT FOLDS
Christina Shou Christensen
Ceramic
Photo: Jeppe Gudmundsen-Holmgreen



GROWN UP, Hot and Heavy Collection, 138 Kingsley



GROWN UP
Hot and Heavy Collection
758 Hermes
+
HOMEGROWN
from Karastan
152 Groundwork



HOMEGROWN
from Karastan
747 Patina
+
GROWN UP
Hot and Heavy Collection
758 Hermes



GATHERED STYLE
Intertwined Collection
141 Overlay
+
MORIKATO
Global Entry Collection
862 Tableau



(from left)
MICROPLEAT
 Simply Tailored Collection
 from Karastan
 948 Alloy

MONO VISTA
 Modesto Collection
 from Durkan
 MH329 711
 +
SECOYA
 Hot and Heavy Collection
 989 Calavaras

MAKER'S MESH
 from Karastan
 658 Knit



UNMADE PALETTE Raw, unprocessed earth tones bring vitality, depth and tactile presence to our increasingly digitized experiences.



BRAIDED TEXTURE
from Karastan
148 Balance
+
SECOYA
Hot and Heavy Collection
148 Atwell Mill

A photograph of a temporary art installation called 'Mirror House' by E. Altenburger. The structure is a small, rectangular building with a gabled roof, entirely covered in mirrors. It is situated on a rocky shore next to a body of water. The mirrors reflect the surrounding landscape, including the sky, the water, and the rocks, creating a seamless transition between the building and its environment. The sky is overcast with grey clouds. The water is dark blue with some ripples. The rocks are dark and jagged. The overall mood is contemplative and surreal.

UNDETACHED

MIRROR HOUSE

E. Altenburger

Temporary installation on
the Isle of Tyree, Scotland
Mirror on steel frame



(from left)
STORM AT SEA
 Tracie Cheng
 Oil and acrylic on wood

From the Series
PLASTIC BAG LANDSCAPES
 Vilde Rolfsen
 Photography

SOFT CRASH
 Kim Byoungcho
 Aluminum, arduino, piezo
 Image Courtesy of Kim Byoungcho
 and ARARIO GALLERY



UNDETACHED

We are facing times of dynamic change, and so we seek grounding and connection. The balance of rational and emotional design provides experiences that connect essence and process in one holistic context. Spaces and objects transcend aesthetics to connect us with their soul. Design provides balance while the world transforms around us.



From the Series
BABINET'S PLAYGROUND
Kate Jackling
Photography



BOLDER, Hot and Heavy Collection, 925 Pebble



INTERCOSMIC
Earth to Sky Collection
from Karastan
935 Meteorite



STRUCTURE
 Definity from Durkan
 QTW49542

(opposite)
LIVING LOCAL
 966 Shadow
 +

TIMELINE
 from Karastan
 948 Sable



HYDROSPHERE

Expedition Collection
739 Glacier

(opposite)

WELL DRESSED

Simply Tailored Collection
from Karastan
965 Smoke

+

COLLECTOR'S EDITION

Local Legacy
77 Linen Maple



CULTIVATED REVIVAL
Bramble Road Collection
from Durkan
MH338_723



UNDETACHED PALETTE Calm illumination and a grounded sense of place flow from colors of shadowy depths into immersive lightness.

STONEAGE

Zest

Mural on stone

UNBIAS

UNBIAS

The past, present, and future have converged in this post post-modern era. A new society has evolved, one that is cross-cultural, nomadic and more tolerant of differences in race, age, gender and beliefs. We are moving towards a universal world where borders are no longer relevant. This blurring of boundaries is the new world order.



(from left)
VIRAL SERIES: BLUE & WHITE
Jess Riva Cooper
Ceramic, glaze, decal

SIGNALHUSET (THE SIGNAL HOUSE)
NOBEL arkitekter
Photo: Jens Lindhe

VOUWPLAATS (FOLD PLACE)
From Conceptroom Huisraad
for the TextielMuseum
Studio Makkink & Bey
Photo: Tommy de Lange,
commissioned by TextielMuseum Tilburg

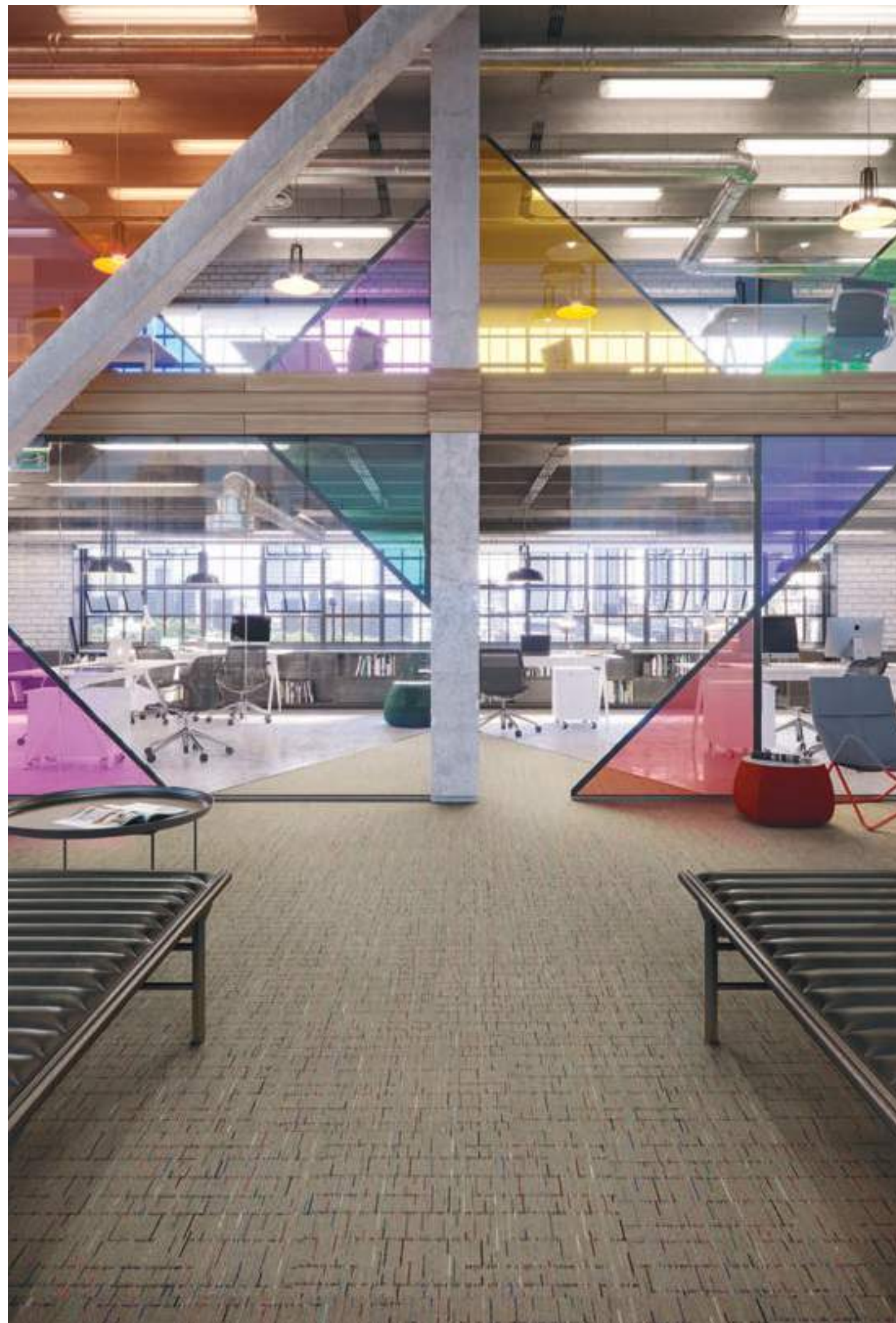
(opposite)
TRANSLATED VASE TVW2
Yeesookyung
Ceramic shards, epoxy, 24k gold leaf
Photo: Kim Sangtae, copyright Yeesookyung





LEUCHTTURM (LIGHTHOUSE)
Ail Hwang, Hae-Ryan Jeong
and Chung-Ki Park
Acrylic on electrical tower

(opposite)
POSTURE
Mixology Collection
131 Madras





DIGITAL TERRAIN
SEISMIC WAVE
GRAVITATIONAL
Expedition Collection
138 Sulpher



CUSTOM BROADLOOM
for Tulalip Resort Casino

(opposite)
COLORBEAT
 529 Sterling Grey, 933 Lunar
 934 Stainless, 964 Graphite
 +
ANGLED PATH
 Geometry Collection
 949 Segment
 +
SOLID STATEMENTS
 Geometry Collection
 565 Base



LAYERED EARTH
Expedition Collection
978 Mineral

(opposite)
ACTIVE TEC STONE
Active Tec Collection
01 Warm Taupe, 02 Light Grey, 06 Dark Brown





METAL
Mass Appeal Collection
859 On the Line



UNBIAS PALETTE Bright, contrasting hues and juxtaposed patterns create a sense of bold simplicity—a new minimalism we are free to explore.

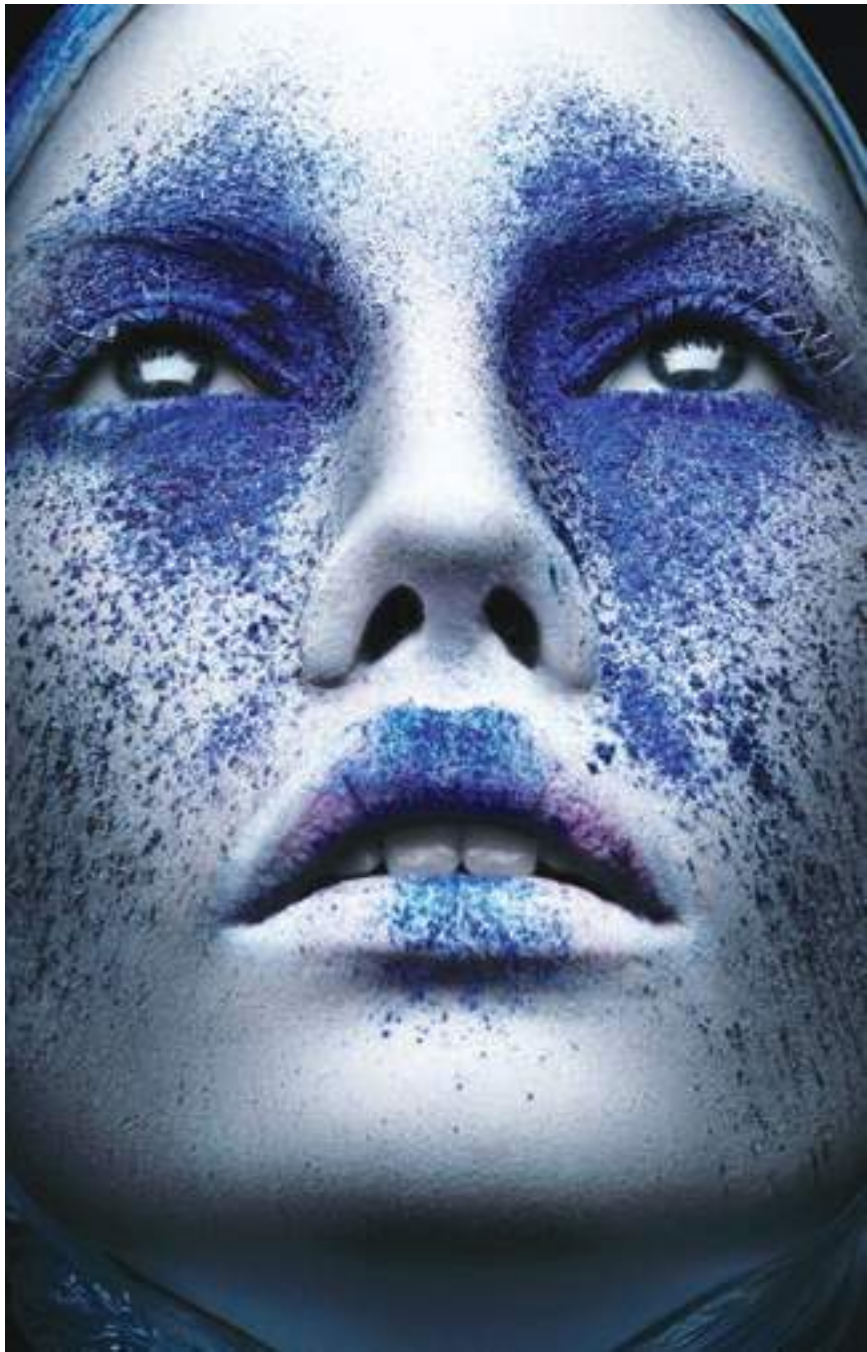


UNCHARTED

GLOWING LIGHTS

from the series
Invisible by Day
Mikko Lagerstedt

Photography



UNCHARTED

We are living in a time of great uncertainty, where the limits of earth and the solar system are being tested in humankind's quest for new frontiers beyond our farms, suburbs and cities. Influenced by experiences of the deep seas and far reaches of the cosmos, a new visual language has emerged.

(from left)

UNTITLED

Alex Buts
Photography

From the Series

THE WEEPING STONES

Tdub Photo
Photography

BLUE WAVES

Secret Wood
Wood and resin



(opposite)

GRADATE

Topography Collection
 589 Black Navy

+

EMBED

Topography Collection
 575 Navy, 989 Dark Grey

+

PLANE HIGH AND PLANE LOW

Moving Floors Collection
 979 Black, 575 Navy, 989 Dark Grey





MOONSCAPES
from Karastan
Warm Grey



DIGITAL TERRAIN
Expedition Collection
978 Mineral

(opposite)
DIGITAL TERRAIN
SEISMIC WAVE
GRAVITATIONAL
Expedition Collection
978 Mineral





(from left)
ANCIENT REFUGE
 Natural Instincts Collection
 from Karastan
 958 Oxford

SOLE TERRA
 Terra Collection
 from Durkan
 MD019_999

HYPER EARTH
 985 Blue Sapphire





UNCHARTED PALETTE Vivid colors of iridescence and dichroic shimmer uncover new ground, joining with biomorphic shapes and earthly textures.



TRENTA STONE
Trenta Collection
958 Windsor